

# State of Wyoming Corner Record

*CORNER PERPETUATION AND FILING ACT,*

Regulations of the Board of Registration for Professional Engineers and Land Surveyors.)

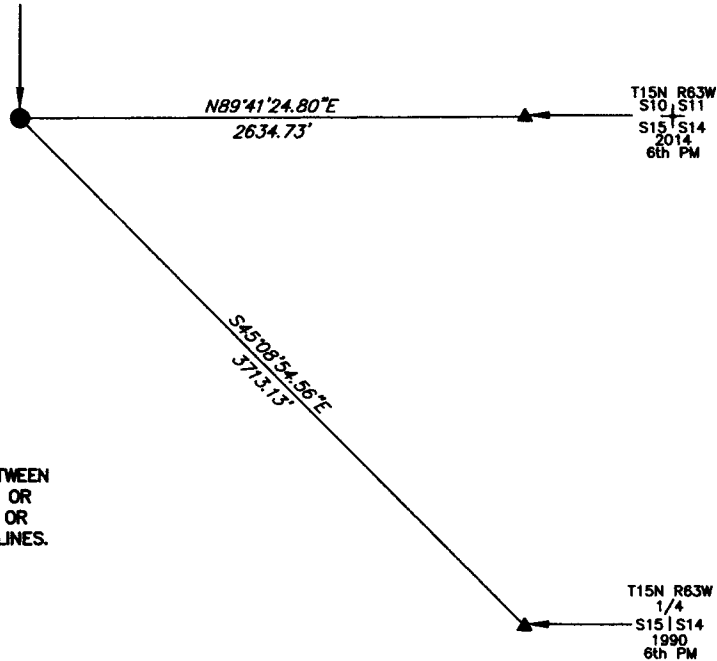
Reverse side of this form may be used if more space is needed.

Record of original survey and citation of source of historic information (if corner is lost or obliterated). Description of corner monumentation evidence found and/or monument and accessories established to perpetuate the location of this corner. Sketch of relative location of monument, accessories, and reference points with course and distance to adjacent corner(s) (if determined in this survey). Method and rationale for reestablishment of lost or obliterated corner.

THE MONUMENT IS FOR:

T15N R63W  
S10  
1/4  
S15  
2010  
6th PM

FOUND THE MONUMENT FOR THIS 1/4 CORNER OF MAXIMUM CONTROL WHICH IS A 3.25" ALUMINUM CAP ON A 3/4" REBAR FLUSH WITH THE GROUND.



NOTE:  
LINES SHOWN ARE BETWEEN MONUMENTS AND MAY OR MAY NOT BE SECTION OR SECTION SUBDIVISION LINES.



**CORNER MONUMENT SYMBOLS**

- RECORD IS FOR THIS CORNER MONUMENT.
- ▲ A RELATED CORNER OR WC MONUMENT.

SCALE 1"=1000'  
(EXCEPT IN TRIVIAL CASES)  
BEARINGS ARE RELATED TO WGS 84 WITH GPS OBSERVATIONS  
DRAWN BY: SM  
P.C. B. LOWREY  
COUNTY: LARAMIE

THE MONUMENT IS MARKED

Date of Field Work: 06/29/2014 Office Reference: \_\_\_\_\_

**CROSS INDEX DIAGRAM**

A	1	2	3	4	5	6	7	8	9	10	11	12	13	14	15	16	17	18	19	20	21	22	23	24	25
B																									
C		6		5		4		3		2															
D																									
E																									
F																									
G		7		8		9		10		11		12													
H																									
J																									
K																									
L		18		17		16		15		14		13													
M																									
N																									
O																									
P		19		20		21		22		23		24													
Q																									
R																									
S																									
T		30		29		28		27		26		25													
U																									
V																									
W																									
X		31		32		33		34		35		36													
Y																									
Z	1	2	3	4	5	6	7	8	9	10	11	12	13	14	15	16	17	18	19	20	21	22	23	24	25

Firm/Agency, Address

UELS, LLC

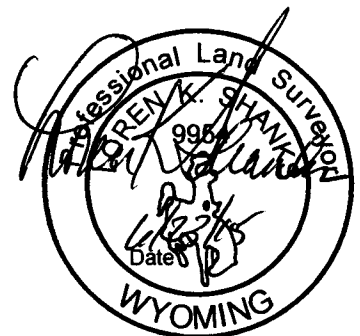
85 South 200 East

Vernal, Utah 84078

Telephone Number: 435-789-1017

This corner record was prepared by me or under my direction and supervision.

SEAL & SIGNATURE



RECP #: 670075  
RECORDED 9/22/2015 AT 10:40 AM BK# 2465 PG# 83  
Debra K. Lathrop, CLERK OF LARAMIE COUNTY, WY PAGE 1 OF 1